

THIS WEEK
4 page issue!

Tairua Pauanui The Local Advertiser



WHAT'S YOUR SCORE?
Use the letters to make 4+ letter words

A	N	D
E	D	P
T	E	N

Beat Barry's 22.
Words must contain the middle letter. Plurals OK if 's' is in the grid.
Barry's answers online, under "issues".

Website: www.tairuaadvertiser.nz

11th December 2024

Phone: +64 7 864 8170 Email: tairua.advertiser@xtra.co.nz

Volume 24 Number 50

Santa's Picnic on the Pepe

Just getting into the swing of Christmas? Needing a bit of musical encouragement? Then "Santa's Picnic on the Pepe" should help!

On Saturday 21st December from 1pm to 5pm the Pepe will resound with joyful strains from the Big Man himself leading the crowds in Christmas songs and entertainment! Three great musical acts have been booked as well, bringing lots of Christmas merriment to the event.

Headlining the show is an

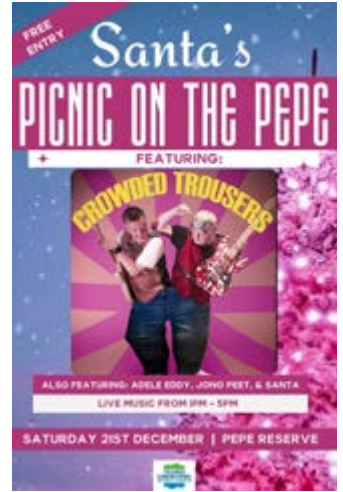
Auckland-based musical duo, Crowded Trousers. Crowded Trousers have gathered quite a following around the bars and clubs in the city, being described as zany, fun and highly entertaining! You will enjoy great music and plenty of humour in everything they bring!

Closer to home, Adelle Eddy will be bringing her free-spirited soul sounds, developed by performing with various bands in and around the Coromandel over

the years. Closer still, Jono Peet, Tairua local author and stalwart of the Music Club among other things, will be performing his favourites.

"Santa's Picnic on the Pepe" promises to be a relaxing afternoon beside the Harbour. Entry is free! The event will be an ideal family outing, so take your picnic or BBQ and sit back, relax and enjoy a visit by Santa, and the wonderful line-up of musicians, there to put you in the Christmas mood!

And just a heads-up, there will be donation buckets circulating for your contributions to supplement



Tairua Information Centre's support for Tairua Food Bank. Bring lots of cash!

SERVICES

1.7 TONNE DIGGER FOR HIRE
\$300 / DAY
\$185 / 1/2 DAY
PLATE COMPACTOR FOR HIRE
\$100 / DAY
Contact 021 345 109

SERVICES

All Plumbing Works
T.J. CLARKE PLUMBING
For Effective & Efficient Service
021 090 16570

SERVICES

ArborCuts TREE SERVICES
PROFESSIONAL ARBORISTS
ALL Treework & Landscaping
Fruit trees • Hedges • Chipping
• Planting Advice
Call/Txt Jon 021 405 555
www.arborcuts.co.nz

SERVICES

CANVAS PRINTS
INC COLLAGE PRINTS
your photos printed on canvas, as single image or collage style and finished with a string line for easy hanging.
tairua.print@xtra.co.nz
07 864 8170

AGENT FOR COURIER
POST HASTE
delivering excellence - people, service, package.
Tairua Print 864 8170

All your home decorating requirements
Jerry Kemp
021 531946
REPAINT SPECIALISTS
Kempaint LTD
fully qualified / over 35 years experience
PAINTING WALLPAPERING
INTERIOR EXTERIOR
RENOVATIONS & RESTORATIONS
WATERBLASTING & PATH CLEARING

Air Conditioning and Electrical
TAIRUA ELECTRICAL
✓ Air Conditioning/Heat Pumps - Fujitsu and Mitsubishi Accredited Installer
✓ Electrical Installations
Phone Graeme
021-893 908

CALENDARS
CHRISTMAS CARDS
GIFT TAGS/STICKERS
PHOTOS & FRAMES
tairua PRINT
Life in the Printed Word
P: + 64 7 864 8170
E: tairua.print@xtra.co.nz

COAST ARCHITECTURE
Architectural Design & Drafting
New Builds • Renovations
Kellie 021 25 11 062
coastarchitecture.nz

Advertising Deadlines **SUBJECT TO AVAILABLE SPACE**: All Boxed & Unboxed ads Friday 5pm. HOURS (subject to change): Monday - Friday 9.30-5. Saturday 9.30-12.30. Sunday & Public holidays Closed.

SERVICES

COMPUTER REPAIRS
SALES AND SUPPORT
WEB DESIGN SOFTWARE
E MARKETING

STICKS
IT SOLUTIONS

0275 616 647

D.R. DECORATORS
PAINTING SERVICES



Ph Dave Ray 021 798 768

GLASS / GLAZING
Tairua - Pauanui

All repairs including
aluminium joinery
Cat doors installed

Ph Brian Hart
027 660 9746

Pauanui Garden & Art
Plants & seedlings
REAL FRUIT ICE CREAMS
Gifts

orange scape design
gardens
design • install • maintain

021 238 3557
elle@pauanuigardenart.co.nz

PIVOTAL
- GAS & PLUMBING LTD -

20+ years experience
Servicing Coromandel areas
New Zealand family business
Trustworthy & honest team

021 814 879
www.pivotalnz.com

POOL QUEEN LTD.
Mobile pool and spa services.
Coromandel Peninsula. Phone
027 316 3384.

SERVICES

Tairua Joinery & Cabinetmaking

- Kitchens
- Makeovers
- Vanities

FULLY QUALIFIED
30YRS EXPERIENCE

20 RED BRIDGE RD
William 07 864 7115
or 021 1739 052



All aspects of
interior and exterior
plastering and painting

Ph 027 818 0856

Your one-stop shop for
maintenance & decorating

TAIRUA PRINT
PHOTOS PRINTED

We have photo frames too!

A: 228 Main Road, TAIRUA



UNITS NOW AVAILABLE

Ph 07 864 8788
0274 832 129

TIDAL ELECTRICAL LTD

"Fast, Friendly & Qualified"

Electrical Repairs
& Installations

New Homes, Renovations
& Extensions


LED Lighting

JERRY POOLE 021 482 066

SERVICES

TILER "Professional Tiling Services" All aspects wall & floor tiling, complete bathroom renovations. Phone Rob Pierce 022 408 4136.

VISA & PASSPORT PHOTOS



Printed or Emailed
Tairua Print 07 864 8170

HOUSE WASHING

Exterior house or commercial building wash, roof wash, fences, driveway, patios - soft-wash for best moss and lichen clean and treatment, exterior window cleaning, or general water blasting, boat ramps & jetties.

100m of hose so access no problem,
Prompt local service with 20 years' experience

Phone: 0800 747 787
Email: atlasgroup@xtra.co.nz
or dial Andy direct on 027 313 4386

SERVICES

WINDOW DRESSINGS

- Blinds
- Drapes
- Shutters

Free Measure & Quote
www.windowdressings.co.nz
021 238 9490

WINDOW WASHING
CLEAR VIEW WINDOWS
JON 021 059 6012

HEALTH

CHIROPRACTIC Clinics

Back in Line

Can't put your
socks on
in the morning?

backinline.co.nz
022 369 8039

PHYSIO

Synergy. Joel. 021 587 262
www.onlinephysio.nz

HEALTH

Pauanui / Tairua Physiotherapy Clinics

Robert Lindsay
Dip.Phty (Otago), ADP (OMT), Dip.MT.

Fully Qualified
Manipulative & Orthopaedic
Physiotherapist

Co-author of
"Treat Your Own Shoulder"

Back & Neck Pain
Hand & Upper Limb Injuries
Rehabilitation following
Orthopaedic Surgery
Acupuncture

Pauanui Medical Centre
& Tairua Medical Centre
Ph. 027 600 8801

PUBLIC NOTICES

Thank you for support throughout 2024

MERRY CHRISTMAS
from Whitianga Flooring Xtra

Book your free measure & quote with us to get your 2025 projects rolling!



WHITIANGA FLOORING XTRA

68 Albert Street
P: (07) 866 2836
www.flooringxtra.co.nz

No pests at the beach!

Summer is when we all start to head to the beaches, and Thames Coromandel District Council (TCDC) has issued a warning for us to be vigilant on our coastline this summer. Keep an eye out on our beaches for signs of the invasive weed 'sea spurge'. Infestations of this toxic species have already been found in Northland and TCDC wants to prevent its arrival here on the Coromandel.



Photo: tcfdc.govt.nz

Sea spurge looks like a small shrub, usually up to half a metre tall. It has multiple stems, often reddish in colour at its base. It has distinctive spiky foliage, with tightly packed blue-green leaves up to 2cm long and 1.6cm wide. Greenish flowers are found on the end of the stems.

Sea spurge is very invasive and toxic, and not at all a welcome visitor to our Coromandel beaches.

Sea spurge is very invasive. It could quickly take over the dunes, pushing out the native plants growing there and destroying shorebird habitats. It is also toxic! If the sap comes into contact with humans it can burn the skin, and if in contact near the eyes it can cause temporary blindness. Not at all a welcome visitor this summer!

found on dunes or among washed-up debris on beaches. If you come across it, the advice is not to handle it as it can spread seeds and the toxic sap can cause injury if the stems are broken or cut.

The sea spurge weed is believed to have arrived in New Zealand on ocean currents from Australia. It is generally

But don't ignore it! Instead, take photos of where you found it and take photos of the plant showing its leaves and flowers for positive identification. If you can also record a GPS location, that would help immensely. Report your sighting to the Ministry of Primary Industry on 0800 80 99 66 or online at report.mpi.govt.nz/pest

SEAGULL CENTRE'S SUMMER HOURS

Seagull Centre, Pauanui
NEW HOURS STARTING 12 December 2024
Thursday, Friday, Saturday, Sunday, Monday
8.30am - 4pm

Seagull Centre, Tairua
Saturday and Sunday
8.30am - 4pm

Follow us on  **Seagull Centre, Tairua/Pauanui**

- Collecting quality goods for resale and recycling -



TAIRUA INFORMATION CENTRE

Gift Shop/ Dry Cleaning/
Agent for NZ Courier

Check out our information website
www.tairua.co.nz

Contact Eve 07 864 7575
for website Advertising



WOULD YOU LIKE TO HELP AT THE CHRISTMAS LUNCH (hosted by Tairua Elim Church) THIS YEAR?

Please come along to a meeting on Dec 19th at 10:30am at Pepe Grand.

All Welcome

PUBLIC NOTICES



Missing a big family Christmas get-together? THEN HAVE LUNCH WITH US!

Bring yourself, bring your whanau, bring your friends, bring your neighbour... join us for a buffet lunch!

ham | chicken | vege option | roast tatoes | salads | pavlova | sweets | crackers | punch

CHRISTMAS DAY 12.30PM • TAIRUA HALL

Transport available. ☎: Marlene 07 864 8762.

PUBLIC NOTICES

PUBLIC NOTICES

Short & Sweet



NOW OPEN IN TAIRUA

After trading in Auckland's Ponsonby Road since 1989, Shellshock is now open in Tairua!

Check us out, next to Out of the Blue Cafe.

We specialise in sterling silver and high-quality fashion jewellery and accessories.

Open Thursday-Sunday.

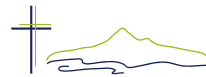
Opening celebration & late night this Thursday, 12 Dec.



CHURCH TOGETHER
Sundays 10.30am
Tairua Hall

PHONE 864 8762
PS. NICO & MARLENE PRINSLOO

*If you want to drink,
that's your business.*
If you want to stop, we can help.
ALCOHOLICS ANONYMOUS
021 425 408



ST FRANCIS CHURCH
WHAT'S ON THIS WEEK

Sunday
9.30am Worship
& Kids' Church
Fellowship & Morning Tea

Wednesday
8.30am Meditation
Tues, Thurs & Sat
Op Shop open
9.30am - 1pm

Enquiries 07 864 8727
or 021 0275 6807
Main Road Tairua
stfrancistairua.com

TCDC's Community Service Awards event saw two Tairua stalwarts receive recognition for service to the town. Tina Larsen, who has probably been involved at some stage or other in every organisation in town, and Les Sinton, who from the moment he arrived as a permanent resident, has been applying his life skills to the upkeep and improvement of various facilities around the town, were acknowledged with awards. Congratulations to both Tina and Les! Sadly, though, Tairua will soon be losing Tina and Arthur to Northland as they move closer to family in the next stage of their "retirement". All those who know, respect and love you, Arthur and Tina, will miss you!

This year we are going to have a slightly different schedule of management on Pepe Bridge over the peak times. There will be stop/go controllers on duty on the 20th, 23rd, 24th, 30th and 31st December, and 6th January only. In between these days, there will be traffic lights working with on-site personnel managing the lights and traffic. Let's all remember to use our best and most polite bridge-traffic manners this holiday season ☺

Tairua St John personnel and volunteers will be out selling tickets in their summer fundraising raffle, this month and the next. The theme this year is "Loyally Local" and there are fabulous prizes including vouchers from local businesses. Proceeds of this raffle will help purchase a CPR AED training manikin. Tickets cost \$5 each or 3 for \$10. Would you like to help sell the raffle tickets? The St John committee is looking for volunteers! Text Rieky on 027 624 1070.

HAUS BLANK

Join us & other retailers for 2
LATE SHOPPING NIGHTS!
Thurs 12th & 19th Dec
Open till 7pm

Here to assist with all your gifting needs!
Complimentary wrapping

Lifestyle • Home • Fashion | 228 Main Rd Tairua

FREE GUIDE

Available from:
Harcourts, Pauanui Info Centre,
Tairua Info Centre, Tairua Print,
Tairua Lotto & Stationery,
Tati Frutti Food Truck,
The Old Mill, Surf & Sand.

AROHA ALOHA

TEA TOWELS

Original design colourful "stamps" hand screen printed on quality 100% cotton tea towels

\$25 each.
Available at Tairua Print
228 Main Rd.